

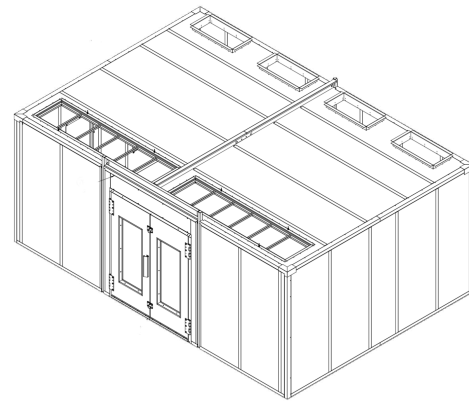
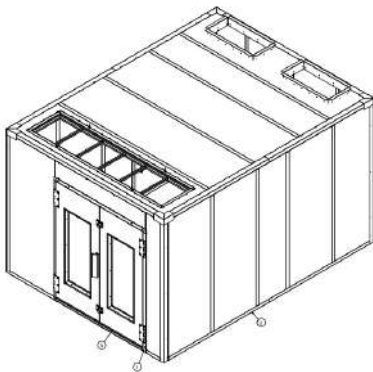
EXP ROOM

EXTRACTION BOOTHS



Easy to Set-Up, Install & Move

- Comes with all fittings and wiring for installation
- Designed to reduce the number of joints and seams in the cabin's construction
- Pre-coated, dual-skin insulated panels provide a smooth fit and finish with no exposed wires or cables
- Catalytic bead flammable gas detection with adjustable set point between 10-50% LEL
- Audible and visual IFC compliant alarming systems
- Explosion proof manual pull station activates high CFM fan but not alarms for off-gassing
- Booth features vertical wall panels designed to reduce the number of joints and seams in the cabin's construction



EXP ROOM 1

Working Dimensions WxHxD	10'0" x 8'0" x 12'6"
Approx. Overall Dimensions WxHxD	10'5" x 8'2" x 13'11"
Weight	3,383 lb
Shipping Weight	3,690 lb
Total Power Consumed	2 kW @ 110V
Flow Emergency	100 LFPM
Linear Plane Static	1 CFM per 1 CF
Min. Fan Static	1,200 CFM

EXP ROOM 2

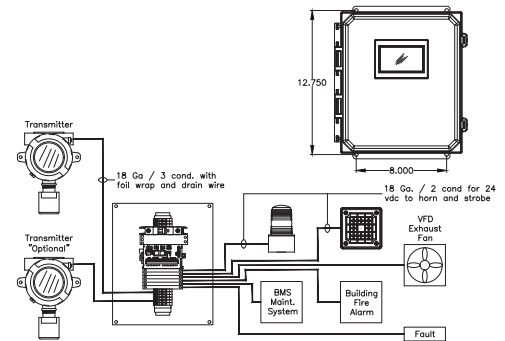
Working Dimensions WxHxD	20'0" x 8'0" x 12'6"
Approx. Overall Dimensions WxHxD	20'5" x 8'8" x 13'11"
Weight	5,365 lb
Shipping Weight	5,972 lb
Total Power Consumed	4 kW @ 110V
Flow Emergency	100 LFPM
Linear Plane Static	1 CFM per 1 CF
Min. Fan Static	2,300 CFM

» Designed to be easily set up in less than a day, the **EXP's H-Channel construction** offers a sleek appearance, a stable atmosphere and high durability - all without exposed nuts, bolts, cables or wires!



(()) GAS DETECTION KIT

- Gas Detector with Color Display and IR Sensor
- Controller, 2 Channel HMI with Touch Color Display and 6 On-board Relays
- Calibration Kit for 6 Month and Annual Maintenance
- CID2 Horn, 24vdc
- CID1 Strobe, 24vdc
- Detailed Drawing and Setup Instructions with Wiring Schematic
- Ongoing Maintenance Instruction and Requirements
- Technical Support per Site/End-User When Required
 - » Installation completed by the end customer
 - » 1-year manufacturers warranty on supplied equipment. Any equipment needing replaced due to manufacturer's malfunction will be replaced under the warranty clause. Labor will be charged.



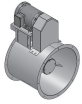
☑ COMPLIANCE

- NFPA sections: 33, 58, 70, 101
- OSHA Safety and Health Standards compliant
- International Fire and Building Codes 2018
- PSI Certified in All 50 States

EXP Rooms are Compliant in ALL Regulated Jurisdictions†
& Third-Party Engineer Peer Reviewed.

† Please refer to operational manual for important safety warnings and legal disclaimers

! Licensed Electrician Install is Required



EXHAUST & PURGE KIT

Control Panel, Monitor &
Gas Detection **included in EXP Kit** 

EXP 1 - EXHAUST SYSTEM	
1 ea.	12" ATA Tube axial in-line exhaust fan* (1,100 Total CFM @ ¼" s.p.)
1 ea.	3/4 h.p. tri-voltage 220 volts, 1 phase, 60 hz TEFC high efficiency motor with variable pitch drive sheave**
EXP 1 - PURGE SYSTEM	
1 ea.	24" ATA Tube axial in-line exhaust fan* (6,900 Total CFM @ ¼" s.p.)
1 ea.	2 h.p. tri-voltage 220 volts, 1 phase, 60 hz TEFC high efficiency motor with variable pitch drive sheave**

EXP 2 - EXHAUST SYSTEM	
1 ea.	18" ATA Tube axial in-line exhaust fan* (2,200 Total CFM @ ¼" s.p.)
1 ea.	1/2 h.p. tri-voltage 220 volts, 1 phase, 60 hz TEFC high efficiency motor with variable pitch drive sheave**
EXP 2 - PURGE SYSTEM	
1 ea.	30" ATA Tube axial in-line exhaust fan* (14,400 Total CFM @ ¼" s.p.)
1 ea.	5 h.p. tri-voltage 220 volts, 1 phase, 60 hz TEFC high efficiency motor with variable pitch drive sheave**

***Tube axial fans** feature a continuously welded housing for an airtight seal. The propellers are non-sparking cast aluminum for consistent air velocity at higher static pressures. The universal motor plates will allow adjustable belt tensioning. The bearings are of premium air handling quality, self-aligning, and have an L10 life of 40,000 hours. The belt guard provides protection from the rotating pulley (OSHA Requirement). Fan has been designed per AMCA 210 Standards.

****Motors** feature a heavy gauge steel frame, double sealed ball bearings that are mechanically locked on the shaft end, and bolt on motor base for easy removal. The service factors for the motor are 1.15 for 3-phase power and 1.0 on 1-phase power.



LIGHT FIXTURES

EXP 1 - LIGHTING	
3 ea.	LED-Fluorescent light fixtures, inside access 48" 4-tube, LED, dual voltage-120/277 with LED tubes included

EXP 2 - LIGHTING	
6 ea.	LED-Fluorescent light fixtures, inside access 48" 4-tube, LED, dual voltage-120/277 with LED tubes included

Lights are Class I, Division 2 rated. Lights are ETL & ETL-C listed and are also listed for locations having deposits of readily combustible paint residue. Instant start (starting temperature at 0°F.) T-8 electronic ballast provides greater energy savings. The lamp holders are twist in style. The lights feature front/inside access for easy lamp replacement and are equipped with an interlock switch to disable painting operations when light access door is opened. Note: fixtures come with whips that run inside panel construction for plug and play connections.

EXP ROOM

EXTRACTION BOOTHS

PRECISION
EXTRACTION SOLUTIONS

2468 Industrial Row Drive, Troy, Michigan 48084

855-420-0020

info@precisionextraction.com

PrecisionExtraction.com

