

# CIDI EXTRACTION

EXTRACTION BOOTHS & MOBILE PODS

# PRECISION

EXTRACTION SOLUTIONS

By AGRIFY

**100% TOTAL TURN KEY**

TRAINING EQUIPMENT DELIVERY

MADE IN EXCLUSIVE  
PARTNERSHIP WITH

## MODULAR EXTRACTION PODS



**Biologics**  
Modular



EXPLOSION-PROOF

## Pre-Fabricated Shipping Containers



PRIMARY EXTRACTION



WINTERIZATION



FILTRATION



DECARB



DISTILLATION



POST-PROCESSING



STORAGE

# MODULAR EXTRACTION PODS

**3 Available Configurations  
both CID1 & Non-CID1 Rated**

**Solutions that fit your needs! With our flexible, scalable, and transportable modular facilities, we offer a minimized capital cost and 4-6 week production timeline.**



## ALL EXTRACTION PODS INCLUDE

- Steel main door on the side of the unit equipped with a panic bar for an emergency exit
- Built-in HVAC system for extraction and utility room to provide comfort heating, cooling and exhaust
- Fork lift pick points full width under the 20' high cube units
- Stub provided for wet sprinkler connection
- Dry chem system available as standard equipment
- Third-party inspection for local jurisdiction code compliance through Pressure Saftey Inspectures, P.S.I.
- Emergency lights with a battery backup for emergency egress

## CID1 EXTRACTION PODS INCLUDE

- Constant flow fan draw across the solvent gas sensor
- High-quality anti-static ESD flooring made to sustain heavy foot traffic and reduce potential contamination
- CID1 LED lighting for safety within the container
- CID1 outlets and switches rated for extraction equipment

## ★ ★ ★ FEATURES

<b>Fire Rated Doors</b>	18 Gauge A40 Galvanneal Door, Interlocking Edge Seam with Square Hinge and Beveled Lock Edge	<b>Static Control Flooring</b>	Using Conductive Nano-Particulate Infused and Grounded
<b>Safety</b>	Fire Suppression, Gas Sensors, Audio & Visual Alarms	<b>Climate Control</b>	3-Ton AC & 3.6kw Heater Provides a Comfortable Working Environment
<b>Wall Panels</b>	16" Panels, Stain-Resistant, Low-Maintenance, and Easy-to-Clean, Smoke and Fire Rated Panels	<b>Location</b>	Suitable for Indoor or Outdoor Use

# CID1 EXTRACTION

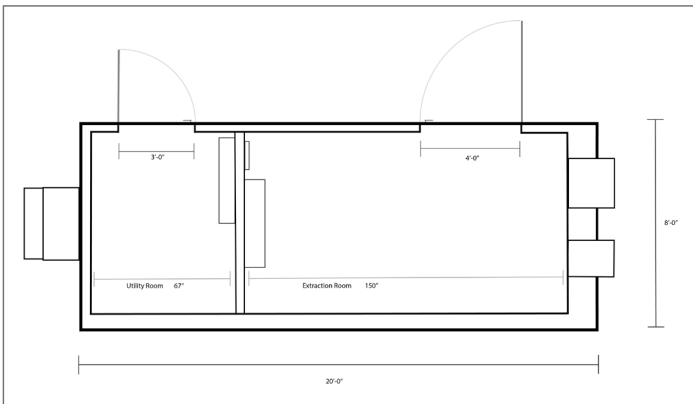
EXTRACTION BOOTHS & MOBILE PODS

## 20' EXTRACTION POD

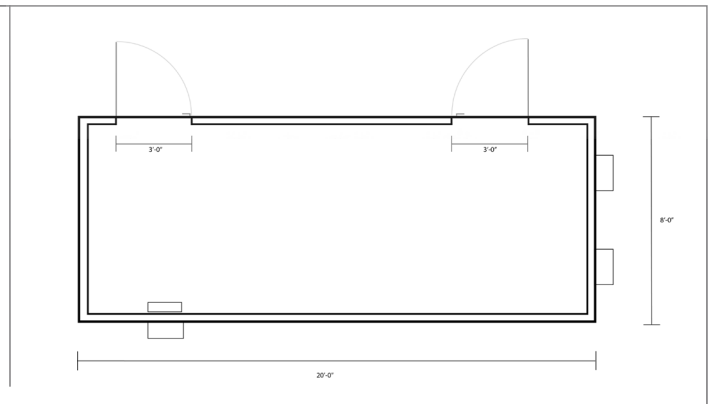
<b>Dimensions</b>	20' L x 8' W x 9' 6" H
<b>Weight</b>	7,735 lbs
<b>Main Power Connection</b>	208V, 3-phase, 200A
<b>Primary Exhaust Fan</b>	1350 CFM
<b>Max Purge Exhaust Fan</b>	3825 CFM



20FT CID1

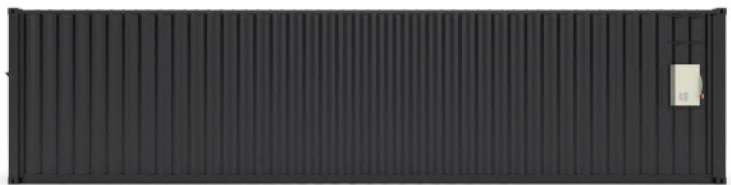


20FT NON-CID1

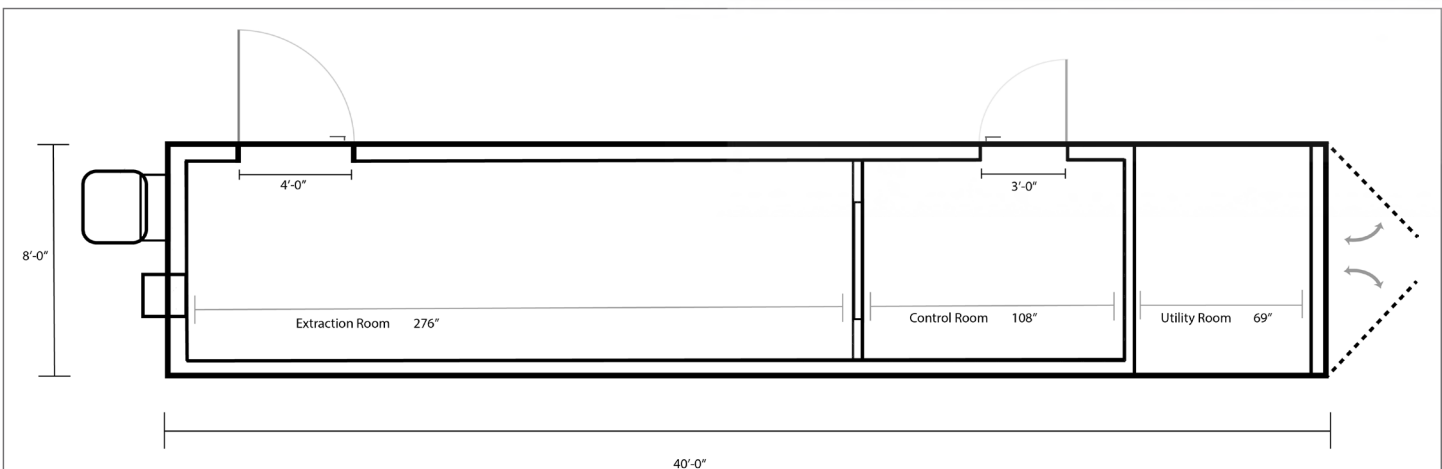


## 40' EXTRACTION POD

<b>Dimensions</b>	40' L x 8' W x 9' 6" H
<b>Weight</b>	10,758 lbs
<b>Main Power Connection</b>	208V, 3-phase, 200A
<b>Primary Exhaust Fan</b>	1350 CFM
<b>Max Purge Exhaust Fan</b>	3825 CFM



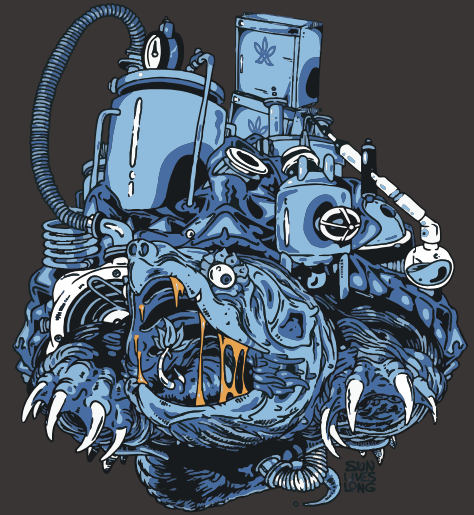
40FT CID1



# CIDI EXTRACTION

EXTRACTION BOOTHS & MOBILE PODS

**PRECISION**  
EXTRACTION SOLUTIONS  
By AGRIFY



---

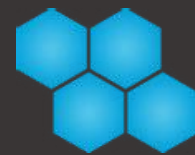
2468 Industrial Row Drive, Troy, Michigan 48084

**855-420-0020**

[info@precisionextraction.com](mailto:info@precisionextraction.com)

[PrecisionExtraction.com](http://PrecisionExtraction.com)

---



**Biologics**  
Modular